

SIMCOE LANDING



EXPERIENCE THE NEW KESWICK





LOVE EXPLORE EXPERIENCE

Located in the heart of Georgina, next to Lake Simcoe, lies your next great adventure. Introducing Simcoe Landing and the New Keswick—an amenity-rich, family-centric community at the centre of a growing and highly desired region. Where nature, lifestyle and adventure are right at your doorstep.

Simcoe Landing is the place to be for the perfect LIVE, WORK, PLAY, balance.

THE NEW KESWICK

LOVE THE NEW KESWICK



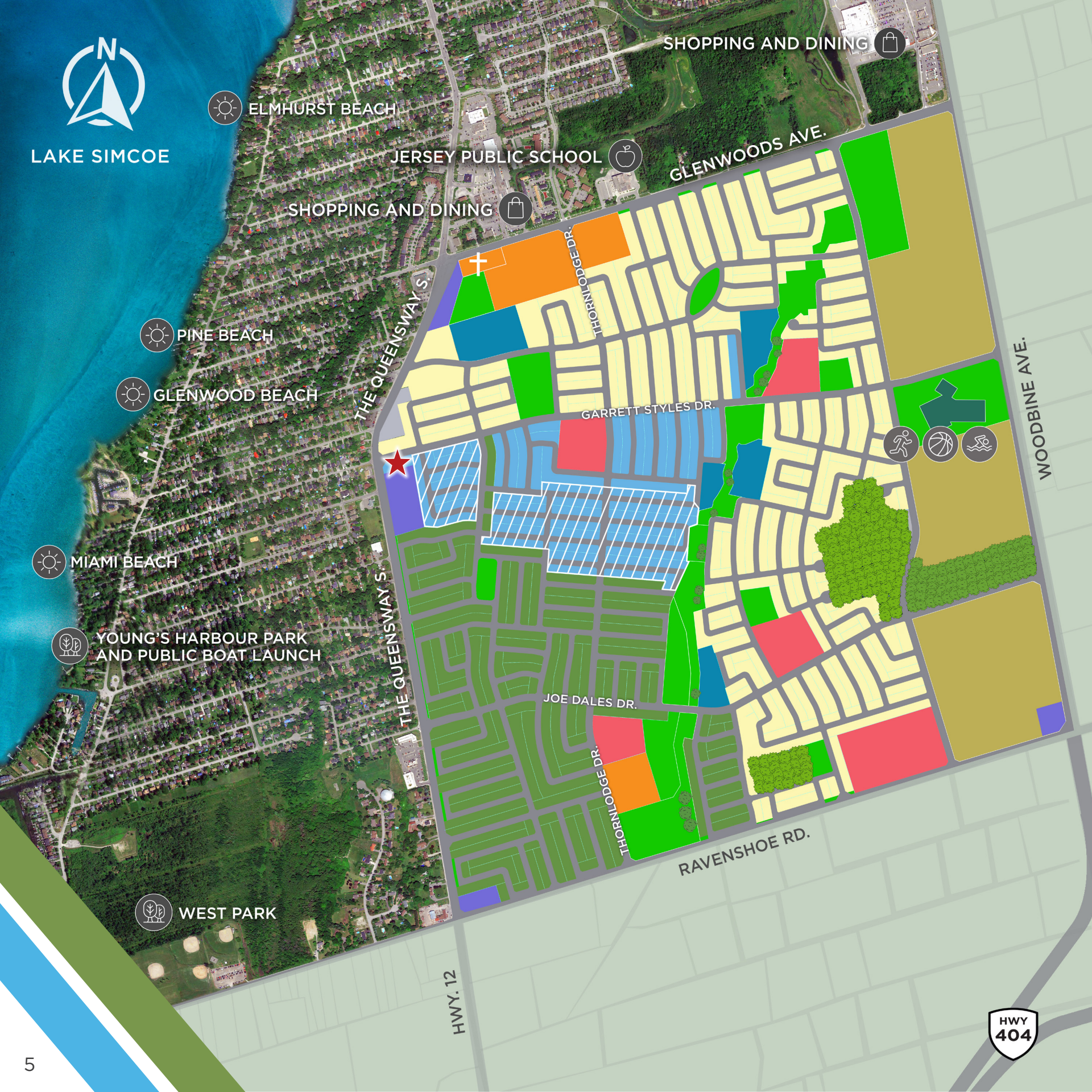
Known for its natural landscape and scenic shoreline, there is more to Keswick than meets the eye. With over 20 years of development, this former “cottage country” town is swiftly evolving, meeting the needs of its residents and offering something special in the process: trendy shops, unique dining, quality new schools, a promising arts community and of course, an enduring outdoor experience.

With the new Highway 404 extension, Keswick is connected to Toronto and the GTA. Only 20 minutes to nearby Newmarket and 40 minutes to downtown Vaughan, it's easier than ever to travel for both commuters and visitors.

With so much to offer residents, Keswick has become a well-rounded community where adventure calls and home is never far away. The New Keswick strikes the perfect balance between work and play, creating a lifestyle and honouring nature simultaneously. It's a place that continues to evolve, with Simcoe Landing right at the heart of it.

You are sure to fall in love with all that is new in Keswick.





SIMCOE LANDING

- CURRENT RELEASE - PHASE
- PHASE
- MODEL HOMES
- EXISTING RESIDENTIAL
- FUTURE RESIDENTIAL
- EXISTING COMMERCIAL
- FUTURE COMMERCIAL
To include: Mixed-Use, Commercial/ Employment & Urban Corridor
- EXISTING SCHOOLS
- FUTURE SCHOOLS
- PONDS / Storm Water Management
- PARKS & NATURAL FEATURES
- FUTURE MULTI-USE RECREATIONAL CENTRE
To include: Basketball Courts, Running Track & Swimming Pool



EXPLORE THE NEW KESWICK



Keswick is located within the Town of Georgina, Ontario—York Region's northernmost municipality. Situated along Cook's Bay on Lake Simcoe, one of Keswick's most compelling attributes is its proximity to the water. With several sandy beaches available to both residents and visitors alike, activities along the lakefront are never in short supply. A getaway at Glenwood Beach can be an everyday occurrence, avid boaters can launch out of Young's Harbour for an afternoon on the water and fishing enthusiasts can reel in their latest catch at some of Keswick's top fishing spots.



Countless trails, conservation areas and parks create a beautifully accessible outdoor playground for the area's growing population. Cross the footbridge at Claredon Beach Park and take in the stunning views of the waterfront. Traverse the forested trails at Vista Park or the winding pathway of Lake Simcoe Trail. And for the golf aficionados, Orchard Beach Golf and Country Club is only a 15-minute drive and par for the course, offering locals spectacular lakeside views and scenery.

The possibilities for adventure are endless. From the toboggan hills at The Roc to the several cycling paths stretched across the community. You'll always find something exciting to do in New Keswick.

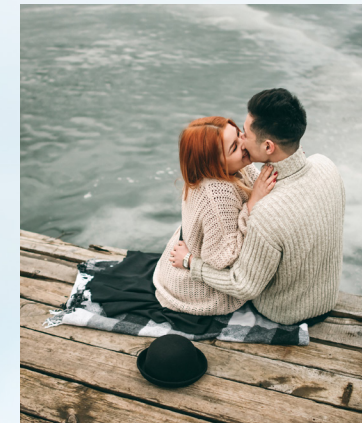
Explore the Possibilities

A PLACE TO CALL HOME

Four acclaimed builders who understand the intricate balance of creating homes that are lifestyle-enriched, functional, comfortable and distinctive in their design are proud to unveil Simcoe Landing and the New Keswick.

Open concept living areas, designer finishes and an attention to every possible detail from the front door to the master ensuite—these are sought-after homes that you are sure to fall in love with.

EXPERIENCE THE NEW KESWICK



Keswick is a veritable haven for style, taste and quality services, with a small-town, intimate feel that honours its charming history, making it the perfect place to live and explore.

One of Keswick's key attributes is its access to quality schools, including everything from daycare to secondary. More are coming soon to accommodate the growing Simcoe Landing community.

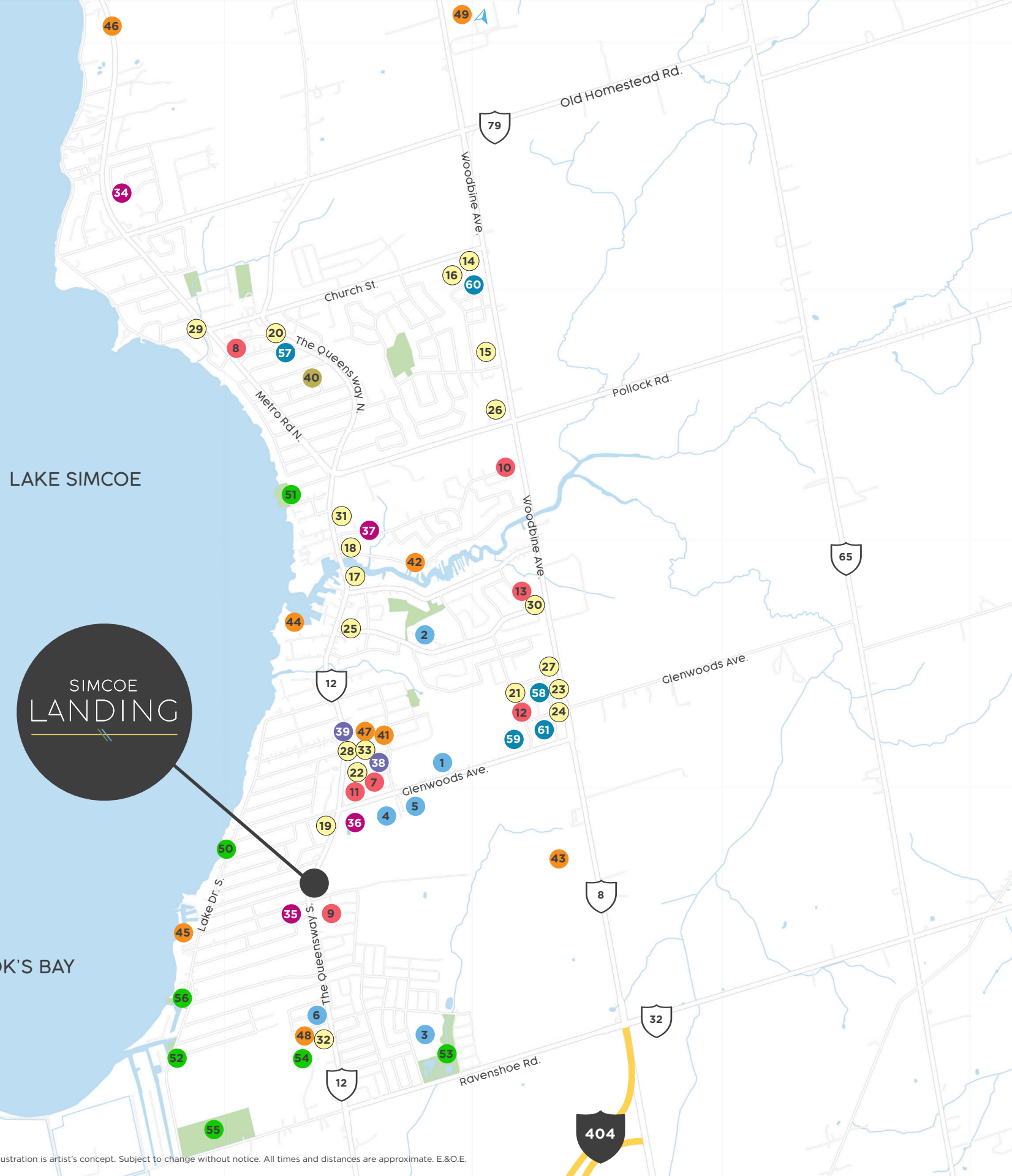
In recent years, the town's gastro-culture has taken shape, with trendy cafés like Elpida Café and Roastery as the go-to destination for your morning cup of jo and delectable restaurant staples such as The Corner House Bistro, CJ Barley's and Riveredge Restaurant. Passion for food and a remarkable dining experience are at the heart of Keswick's dining locales.

As the community continues to grow, so has the arts and culture scene. Shows at the historic Stephen Leacock Theatre, art at the Georgina Arts Centre and Gallery or family-fun activities at Georgina Pioneer Village are all just a short drive away and add to New Keswick's distinctive charm.

Experience Local Living



- Highway 404 - 5 Minutes
- Newmarket - 18 Minutes
- Richmond Hill - 31 Minutes
- Toronto - 47 Minutes



Map not to scale. Illustration is artist's concept. Subject to change without notice. All times and distances are approximate. E.&O.E.

Find Keswick Here

Keswick has everything and more to offer new homeowners. From big-box stores to humble mom-and-pop shops, you'll always find what you're looking for. Necessities can be found at Walmart Supercentre, FreshCo, Home Hardware, LCBO and even more located in nearby Newmarket. You'll also find several local businesses, where you can spend your Saturdays at The Queensway Marketplace or treasure hunt for one-of-a-kind décor at Room to Bloom.

This is Simcoe Landing in the New Keswick, a vibrant community on the rise.

SCHOOLS & DAYCARE

- 1 - Jersey Public School
- 2 - Keswick High School
- 3 - Lake Simcoe Public School
- 4 - Our Lady of the Lake Catholic College School
- 5 - Prince of Peace Catholic Elementary School
- 6 - Top Of The Hill Nursery

RETAIL

- 7 - FreshCo Queensway & Glenwoods
- 8 - Food Basics
- 9 - Keswick Home Hardware
- 10 - LCBO
- 11 - The Beer Store
- 12 - Walmart Supercentre
- 13 - Zehrs

DINING

- 14 - Alfredo's Ristorante
- 15 - Baileys Homestead Restaurant
- 16 - Big Bone BBQ
- 17 - Boston Pizza
- 18 - C.J. Barley's
- 19 - Dairy Queen Grill & Chill
- 20 - Elpida Café & Roastery
- 21 - McDonald's
- 22 - Pizza Pizza
- 23 - St. Louis Bar & Grill
- 24 - Sunset Grill
- 25 - Sushi Minato
- 26 - Swiss Chalet
- 27 - Symposium Cafe Restaurant & Lounge
- 28 - That's A Wrap
- 29 - The Corner House Bistro
- 30 - The Naked Wing
- 31 - The Queensway Marketplace
- 32 - Tim Hortons
- 33 - Wild Bill's Bistro

Places of Worship

- 34 - Our Lady of the Lake Church
- 35 - Hope for Today Fellowship
- 36 - Maple Hill Baptist Church
- 37 - Chabad Jewish Centre of Georgina

HEALTHCARE

- 38 - Glenwoods I.D.A. Pharmacy
- 39 - Shoppers Drug Mart

ARTS, CULTURE & ENTERTAINMENT

- 40 - Stephen Leacock Theatre

RECREATION

- 41 - 24/7 NRG Fitness
- 42 - Coves of Keswick Marina
- 43 - FUTURE Multi-use Recreation Centre
- 44 - Krates Marina
- 45 - Muffin's Point
- 46 - Orchard Beach Golf & Country Club
- 47 - Rumble Martial Arts and Fitness
- 48 - Snap Fitness
- 49 - The ROC

PARKS

- 50 - Glenwood Beach Park
- 51 - Claredon Beach Park
- 52 - Georgina Leash Free Dog Park
- 53 - Thornlodge Park
- 54 - Vista Park
- 55 - West Park
- 56 - Young's Harbour Park

SERVICES & TRANSPORTATION

- 57 - CIBC
- 58 - RBC Royal Bank
- 59 - Scotia Bank
- 60 - Service Ontario
- 61 - TD Canada Trust



BREAKING NEW GROUND

A new multi-use recreation complex (MURC) is coming to Keswick in the Town of Georgina. Neighbouring Simcoe Landing to the east, the complex will be a convenient, community space designed for families and will include a variety of useful amenities, including both a lap and leisure and therapy pools, full gymnasium, meeting and multi-purpose rooms, playfields, park and a Discovery Library branch. It will be a place for kids to take swimming lessons, for after-work basketball games, quiet study sessions, catching up with friends and much more. New Keswick residents will find this new hub a useful and welcome addition to the many amenities offered throughout the community.



YOUR NEW KESWICK AWAITS AT SIMCOE LANDING



MEET OUR ACCLAIMED BUILDERS



At the heart of Aspen Ridge Homes is customer satisfaction. Every day, Aspen Ridge Homes strives to exceed customers' expectations with an unwavering commitment to the design, construction and value of the homes they build through technological innovation and traditional customer service. Time and again, Aspen Ridge Homes builds communities of dreams that last a lifetime.



CountryWide builds distinctive homes that tradespeople are proud to help create and our customers love to call their own. We pride ourselves on delivering excellence and building to a higher standard. We value craftsmanship with exceptional service and take great care in our caring, because our relationships with our homebuyers are just as important to us as your new home is to you.



Marycroft Homes believes that a quality home is one that offers true and lasting value, giving our customers more for their new home dollar. We recognize buying a home is a life-changing event and we are committed, from the point of sale to after-sales service, to making the experience simple and rewarding for our customers.



Regal Crest Homes places importance on ensuring the complete comfort and happiness of our purchasers and the quality of every new home we build. Today, when value-conscious new home buyers choose Regal Crest, they can be completely confident about two things: a new home they will be proud to own today and lasting value that will appreciate in the years ahead.

NewKeswick.com

EXPERIENCE THE NEW KESWICK

